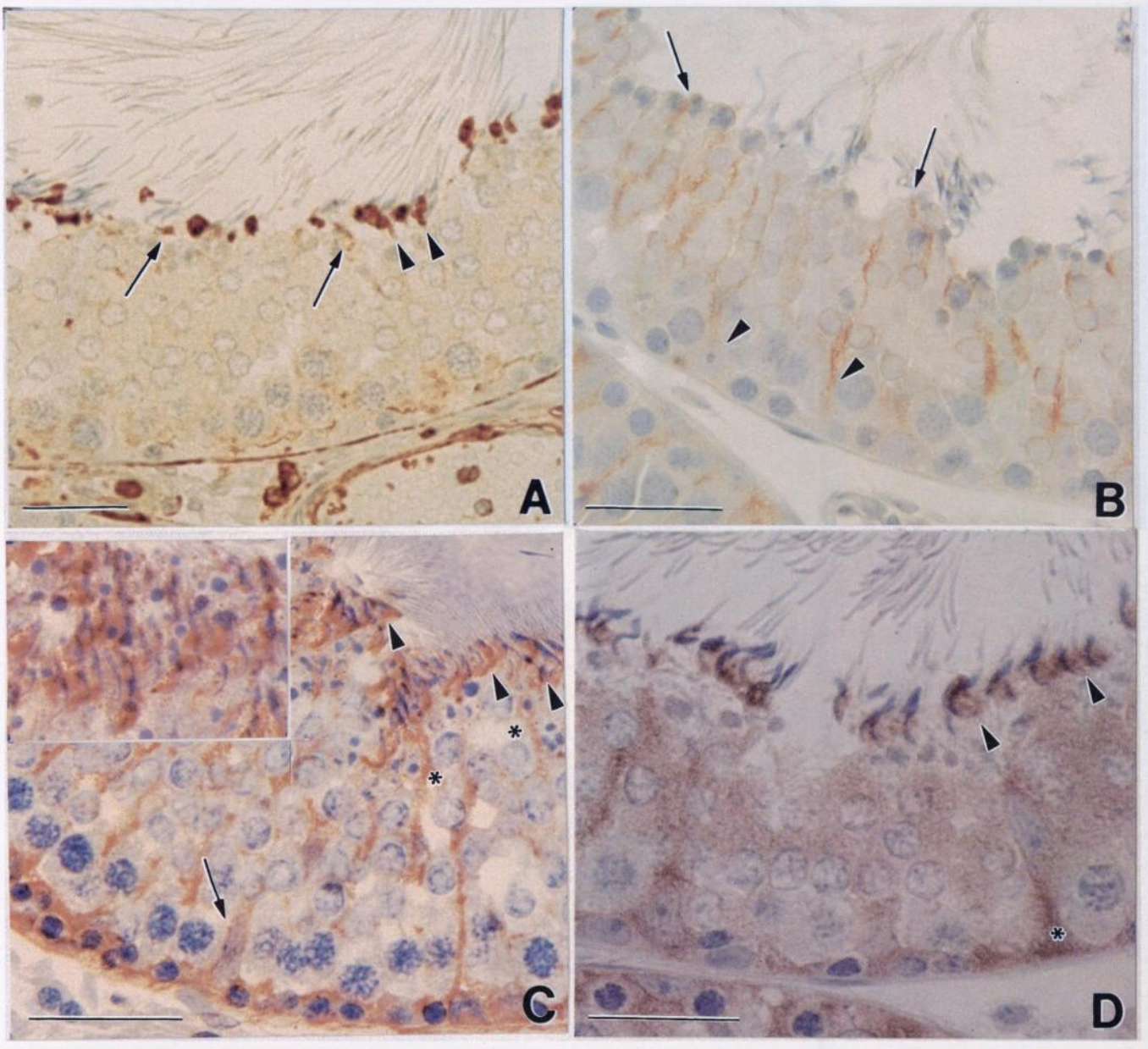
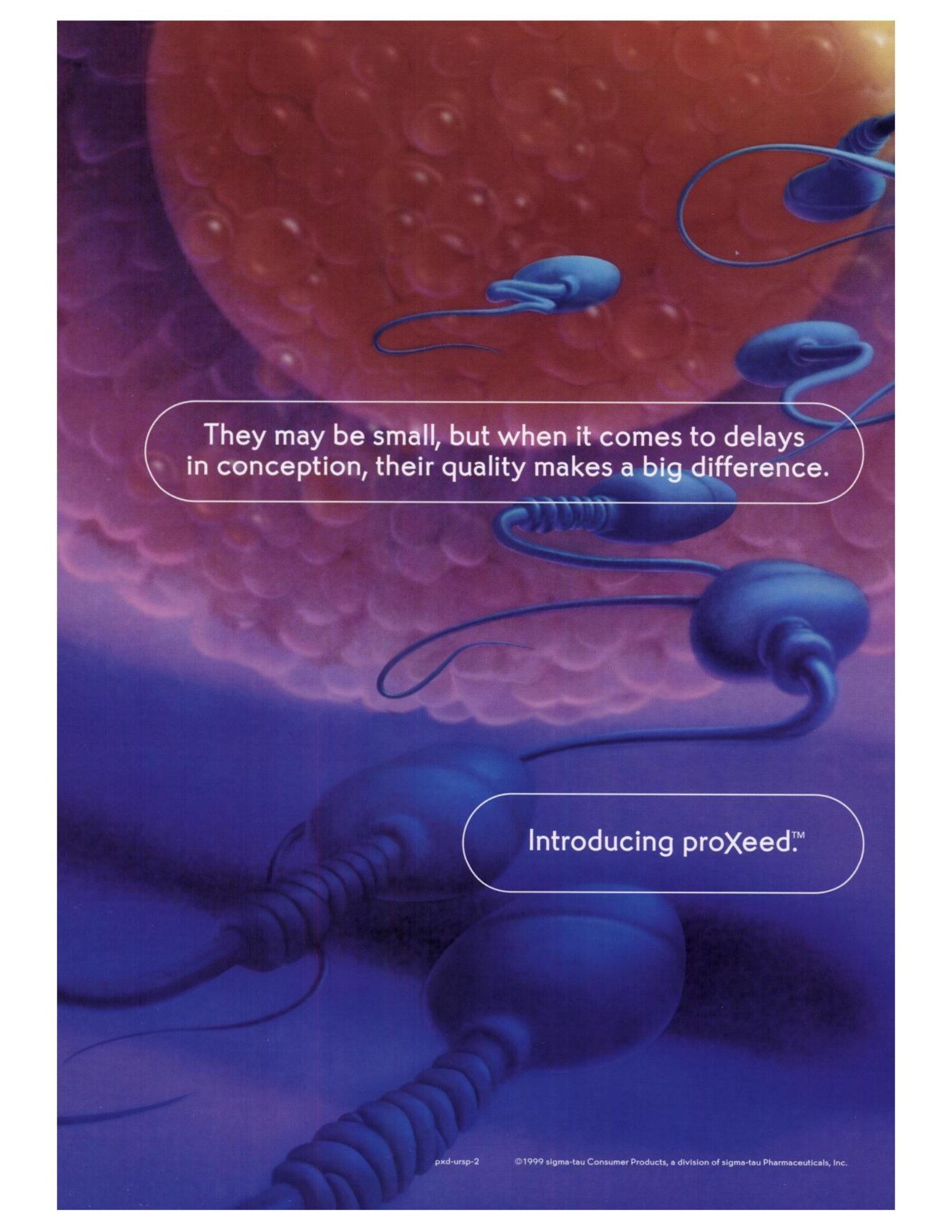


Journal of ANDROLOGY



An artistic illustration of a sperm cell fertilizing an egg cell. The egg is a large, textured sphere at the top, and several sperm cells with long tails are swimming towards it. The background is a gradient of purple and blue.

They may be small, but when it comes to delays
in conception, their quality makes a big difference.

Introducing proXeed.™

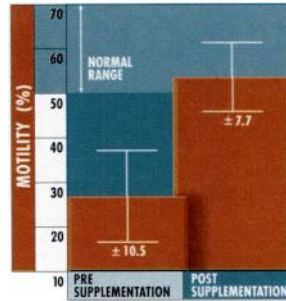
Research shows that among all healthy couples taking longer than expected to conceive, sperm quality is a contributing factor for as many as 40%. Yet there are limited options available to address sperm quality.

That's why we've developed proXeed™ with ingredients clinically proven to optimize sperm quality.^{2,3, 5, 8-12}

Factors determining sperm quality include motility, rapid linear progression, count, concentration and morphology. proXeed's primary ingredients are vital to sperm maturation and optimal sperm quality.

Clinical studies show that optimum results occur within six months of beginning supplementation and initial results occur within three.

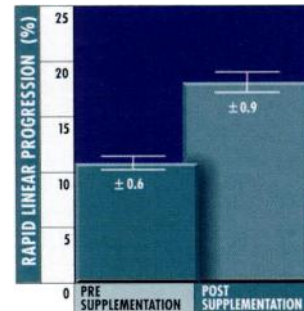
Recommend proXeed to your patients with confidence, knowing it's backed by years of scientific research and an established, international pharmaceutical company, sigma-tau Pharmaceuticals, Inc.



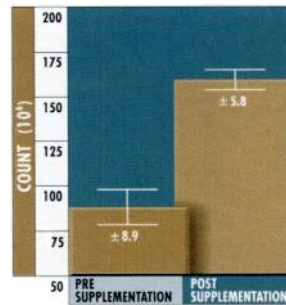
Motility increased by 99.63% for 80% of patients supplemented.

Vitali, G, et al, *Drugs Experimental Clinical Research* 1995; 21(4): 157-159

Rapid linear progression improved 80%. Velocity, linearity and lateral head displacement also showed improvement.



Costa, M, et al, *Andrologia* 1994; 26:155-159



The total number of ejaculated sperm increased 80.68% after three months of supplementation.

Vitali, G, et al, *Drugs Experimental Clinical Research* 1995; 21(4): 157-159

Please see the following page for additional information.

PROXCEED™

Promotes optimum sperm quality



sigma-tau Consumer Products
a division of sigma-tau Pharmaceuticals, Inc.
Gaithersburg, Maryland 20877

Direct Medical Inquiries to:
Toll-Free: (888) 818-5448
Or: (301) 948-5450
Fax: (301) 948-5452
Email: info@sigmatau.com

Direct Product Orders to:
Toll-Free: (877) PROXEED (776-9333)
Web: www.proxeed.com

PROXEED™
[prox'-ēde]
dietary supplement
promotes optimum sperm quality

Description: PROXEED is a dietary supplement specifically formulated to optimize sperm quality. Sperm quality refers to motility, rapid linear progression, count, concentration and morphology.

Suggested Use: To optimize sperm quality.

Active Ingredients: L-carnitine fumarate, fructose, acetyl-L-carnitine HCl, citric acid

Levocarnitine (L-carnitine) is a carrier molecule for medium and long-chain fatty acids and is essential in the transportation of these fatty acids into the mitochondria where they can be utilized for β -oxidation. Levocarnitine is a component of both seminal plasma and sperm cells, and it plays a critical role in sperm maturation and potential sperm motility.¹

Fructose is one of the major energy-yielding substrates present in seminal fluid²

Acetyl-L-carnitine is the acetyl ester of levocarnitine and occurs naturally in the body. When converted to acetyl-CoA, it can enter the Krebs Cycle, be converted to acetoacetate (a ketone body) or be used for fatty acid synthesis. Additionally, acetyl-L-carnitine is important for membrane stabilization, is the most prominent form of carnitine in sperm,^{3,7} serves as a circulating energy source for sperm,⁷ plays an important role in sperm maturation and metabolism^{5,7} and provides the primary fuel for sperm motility.^{4,5,8}

Citric acid is a key intermediate in the Krebs Cycle.

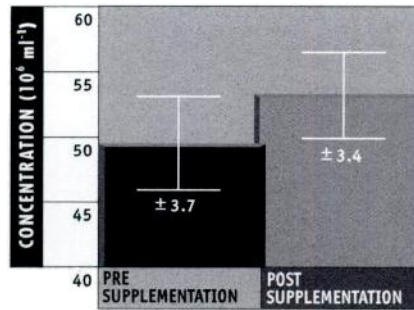
Inactive Ingredients: mannitol, artificial flavorings, saccharin

Supplement Facts:		
Serving Size: 1 Packet		
Serving Per Container: 30		
	Amount Per Serving	% Daily Value
Calories	8	<1%*
Total Carbohydrate	2g	<1%*
Sugars	2g	**
L-carnitine	1g	**
Acetyl-L-carnitine	.5g	**

* Percent daily values based on a 2,000 calorie diet.
** Daily value not established.

Clinical Findings: Among healthy couples taking longer than expected to conceive, poor sperm quality is a contributing factor for nearly 40% of all cases.¹ PROXEED's primary ingredients are levocarnitine and acetyl-L-carnitine. In eight clinical trials, levocarnitine and acetyl-L-carnitine have been proven to provide the nutritional support needed for sperm's production of energy and optimum sperm quality.^{2,3,5,8,12}

See charts on reverse side for information regarding improvements in motility, rapid linear progression and count.



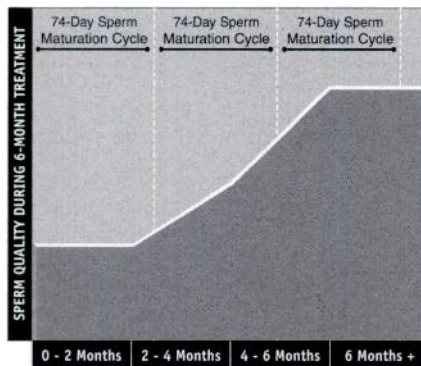
Sperm concentration improved after 4 months of supplementation.

[Vitali, G, et al, *Drugs Experimental Clinical Research* 1995; 21(4): 157-159]

There has been only limited data on whether the ingredients in PROXEED have a measurable effect on sperm morphology.

Bioavailability/Pharmacokinetics: Levocarnitine and acetyl-L-carnitine have oral bioavailabilities of between 5 and 15% in healthy adults. Clinical studies have shown that oral doses of 3g per day (total) of carnitines are appropriate to optimize sperm quality.^{2,8,12} To achieve the appropriate dose, it is necessary for PROXEED to be provided as a powder formulation.

The oral half-lives of levocarnitine and acetyl-L-carnitine are approximately 3-4 hours. As a result, the total daily dose should be divided b.i.d., and spaced 8 or more hours apart to maintain elevated blood levels of levocarnitine and acetyl-L-carnitine.



On average, sperm require 74 days to mature, and up to 30 additional days to become capable of fertilization. Initial results should be seen within 3 months and continued improvement—leading to optimum results—within 6 months.

Precautions: As with all supplements, please keep this product out of the reach of children, and consult with your physician before use if you are taking any medications.

Contraindications: none known.

Drug Interactions: none known.

Dosage and Administration: Take two packets of PROXEED per day, one packet in the morning and one packet in the evening. Mix each packet with at least 4 ounces (120ml) of water or other beverage. Initial results should be seen within 3 months and continued improvement—leading to optimum results—within 6 months. Patients who miss a dose should continue with the next dose. Double dosing is not necessary.

PROXEED is designed for long-term administration and should be taken as long as attempting to conceive.

How Supplied: PROXEED is available in single dose packets packaged 30 per box. PROXEED's powder formulation allows for the necessary ingredients in the amounts shown to be effective in clinical trials.

To order PROXEED, visit the web site:
www.proxeed.com or call toll-free
(877) PROXEED (776-9333).

PROXEED is manufactured for sigma-tau Pharmaceuticals, Inc., Gaithersburg, Maryland 20877. Product of Italy. PROXEED is a trademark of sigma-tau HealthScience S.p.A. Patent Pending. All rights reserved.

References:

- Jeulin, C, et al, Role of Free L-carnitine and Acetyl-L-carnitine in Post-Gonadal Maturation of Mammalian Spermatozoa. *Human Reproduction Update* 1996; 2(2): 87-102
- Vitali, G, et al, Carnitine Supplementation in Human Idiopathic Asthenospermia: Clinical Results. *Drugs Experimental Clinical Research* 1995; 21(4): 157-159
- Loumbakis, P, et al, Effect of L-carnitine in Patients with Asthenospermia; 12th Congress of the European Association of Urology, Sept. 1-4, 1996. *Paris in European Urology* 1996; 30(2): 225, Abstract 954
- Golan, R, et al, Influence of Various Substrates on the Acetylcarnitine:Carnitine Ratio in Motile and Immotile Human Spermatozoa. *Reproduction and Fertility* 1986; 78: 287-293
- Moncada, ML, et al, Effect of Acetylcarnitine Treatment in Oligoasthenospermic Patients. *Acta Europaea Fertilitatis* 1992; 23(5):221-224
- Bartellini, M, et al, L-carnitine and Acetylcarnitine in Human Sperm with Normal and Reduced Motility. *Acta Europaea Fertilitatis* 1987; 19(1): 29-31
- Kohengkul, S, et al, Levels of L-carnitine and L-0-acetylcarnitine in Normal and Infertile Human Semen: A Lower Level of L-0-acetylcarnitine in Infertile Semen. *Fertility and Sterility* 1977; 28(12): 1333-1336
- Costa, M, et al, L-carnitine in Idiopathic Asthenozoospermia: A Multicenter Study. *Andrologia* 1994; 26: 155-159
- Campaniello, E, et al, Carnitine Administration in Asthenospermia; 4th International Congress of Andrology, Firenze, May 14-18, 1989. Abstract
- Muller-Tyl, E, et al, Effects of Carnitine on Sperm Count and Motility. *Fertilizat* 1988; 4(1): 1-4
- Micic, S, et al, Does L-carnitine Administered In Vivo Improve Sperm Motility? *ARTA* 1995; 7: 127-130
- Micic, S, Effects of L-carnitine on Sperm Motility and Number in Infertile Men; 16th World Congress on Fertility and Sterility, San Francisco, Oct. 4-9, 1998. Abstract

PureSperm[®]

The only purification that offers

- Safety and efficacy
- Simple, flexible methodology
- Excellent sperm recovery, motility and survival
- Long shelf-life with maintained quality
- Lowest cost per preparation*



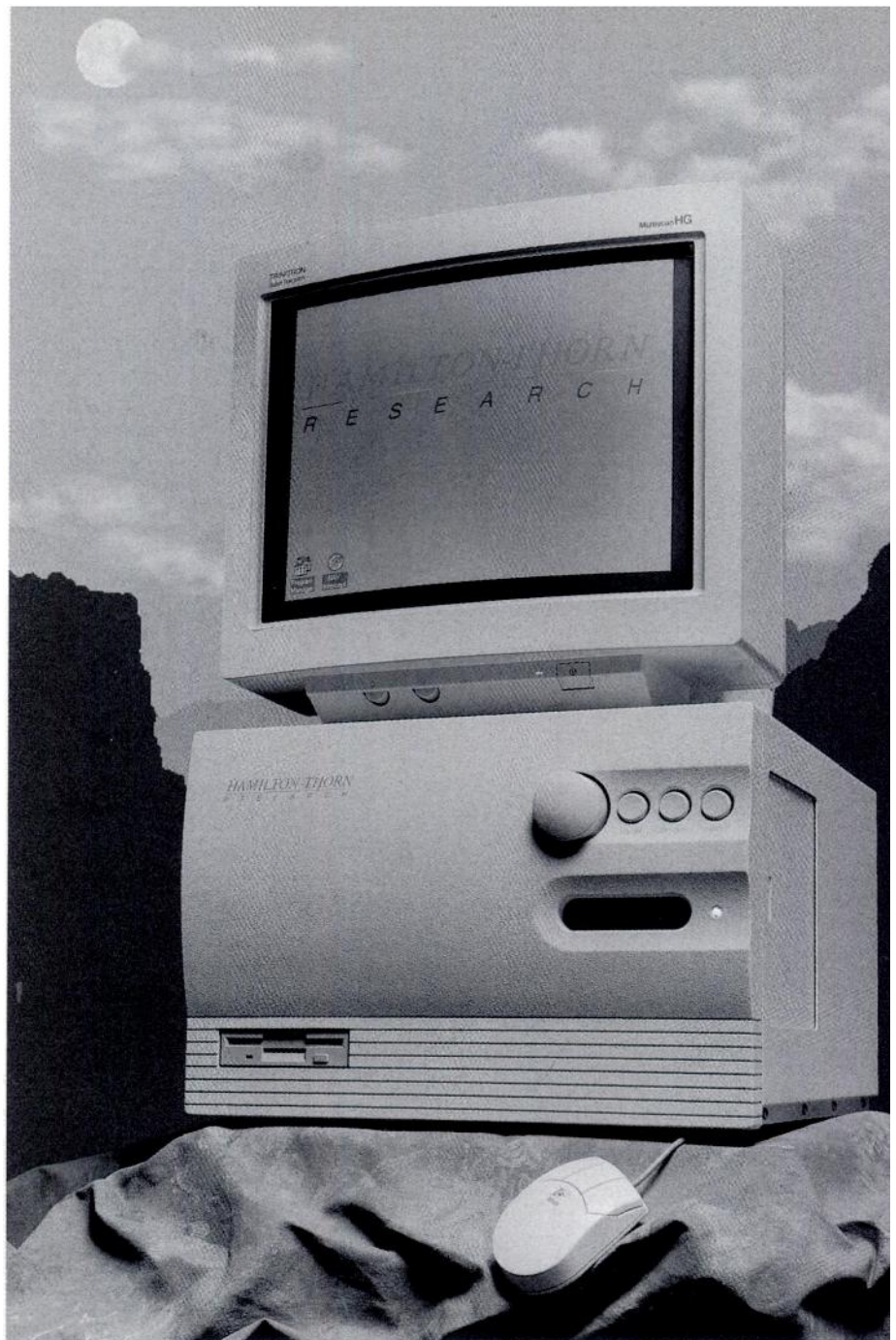

Nidacon

Please visit us at: www.nidacon.com or
contact us by email: contact@nidacon.com
Tel: +46-31-40 54 40/41 Fax: +46-31-40 54 15

PureSperm is optimised for purification of human sperm used in Assisted Reproduction Technologies.
*independent survey of USA and UK 1998 list prices. *PureSperm is a registered trademark of Nidacon International AB*

New HEIGHTS in Flexible cell analysis

Building upon the rock solid reliability of the **HTM-IVOS**, the new Version 10 system climbs to innovative heights in semen analysis. With multiple magnifications, extended analysis options, and new Windows™ based software, the Version 10 **HTM-IVOS** is the pinnacle of versatility.



HTM-IDENT

HTM-IDENT, the first option of the Spectra series of integrated, fluorescent technologies, yields a higher degree of accuracy in sperm counts and concentrations. With the use of a specialized DNA-specific dye, the sperm are readily identified under fluorescent illumination and easily discriminated from debris.

HTM-DIMENSIONS

Expanding into the field of morphology analysis, **HTM-DIMENSIONS** automated analysis system objectively classifies sperm by strict analysis of the head, acrosome, and midpiece. High power, 100x magnification produces crisp images of stained sperm for analysis.

Call today for more information about the new Version 10 HTM-IVOS, HTM-IDENT, and HTM-DIMENSIONS, the three new "Innovations To Rely On" from Hamilton-Thorn Research.

181 Elliott St., Suite 505, Beverly, MA 01915, (508) 921-2050, (800) 323-0503 Fax: (508) 921-0250

**HAMILTON-THORN
RESEARCH**

Obstruction of the Vas Deferens Alters Protein Secretion by the Rat Caput Epididymidal Epithelium <i>In Vivo</i> / T. T. Turner, T. A. Riley, D. D. Mruk, C. Y. Cheng	289
Involvement of Endothelial Nitric Oxide Synthase in the Impaired Endothelium-dependent Relaxation of Cavernous Smooth Muscle in Hypercholesterolemic Rabbit / K. K. Seo, H.-Y. Yun, H. Kim, S. C. Kim	298
Molecular Cloning and Developmental Expression of the Major Fibrous Sheath Protein (FS 75) of Rat Sperm / M. El-Alfy, D. Moshonas, C. R. Morales, R. Oko	307

American Society of Andrology (ASA) News

Future ASA Annual Meetings	319
<i>Handbook of Andrology</i>	320

Announcements

Training Program in Andrology and Male & Female Infertility . . .	321
The CONRAD Program Request for Applications	321
Serono XVth Testis Workshop	322
<i>Testosterone: Action-Deficiency-Substitution</i> Book Announcement	322
EFES Postgraduate Course in Molecular and Cellular Endocrinology	323
VIIth International Congress of Andrology Program	324

Cover: *These 4 photomicrographs are part of a project trying to identify proteins, which mediate and control the adhesion of late spermatids prior to Sertoli cells. (A) Actin is very prominent around the heads of spermatids prior to spermiation (arrowheads). The intensity and size of the product decreases just before spermiation (arrows). (B) b-Tubulin, unlike actin, is distributed radially from the basal Sertoli cell nuclei (arrowheads) to the luminal edge of the epithelium (arrows). The distributions for actin and tubulin are the same as reported in several previous publications. (C) The distribution of Vinculin, which caps actin filaments in other cell types, more closely parallels b-tubulin's distribution. It clearly encompasses both adluminal spermatids (arrowheads) as well as residual bodies (inset). (D) Paxillin, a scaffolding protein common in focal adhesions, is widely distributed in the testis. It is clearly in Sertoli cells (going from below the nucleus (*) out to surround the adluminal spermatids [arrowheads]), as well as round spermatids, though it is less pronounced in pachytene spermatocytes. Bars = 50 μm. (See article by Wine and Chapin.)*

<http://godot.urol.uic.edu/~androlog>

Contents include: Society officers and Council members, committees, past Presidents, the ASA Constitution and Bylaws, past and future meetings, information about the Journal of Andrology, the ASA Newsletter, Androlog—the andrology user's group, links to other societies dealing with reproduction, and links to our members.



New Benefits for Our Readers!

Free Access to the *Access to UnCover*[®] Database Service and
Special Discount on Document Delivery!

You can now access free of charge the UnCover on-line database, which indexes tables of contents information from nearly 18,000 scholarly journals—the largest and most comprehensive scholarly journal article database in the world. You can also order delivery of full-text articles including charts, photographs, and graphics from citations in the database and receive a \$2.00 discount per article off the regular document delivery price.

With *Access to UnCover*, you can search for articles by topic, by author, or by journal. You can then order on-line the full text of articles, including charts, photographs and graphics, for delivery by fax within 24 hours. Payment for document delivery can be conveniently made by credit card or through a deposit account.

To use this service, readers need only access the Allen Press World Wide Web site at: www.allenpress.com and follow the link to *Access to UnCover*. When prompted for user name, type “access” (lowercase) and for the password type “deliver” (lowercase).

Another Benefit: Discount on *Reveal* Service

With *reveal* service, you receive by e-mail the tables of contents of journals you select—immediately after each issue is published. In addition, you can also receive weekly topic alerts by creating custom keyword search strategies. To sign up for the *Reveal* service, call 800-787-7979 and mention your *Access to UnCover* password.