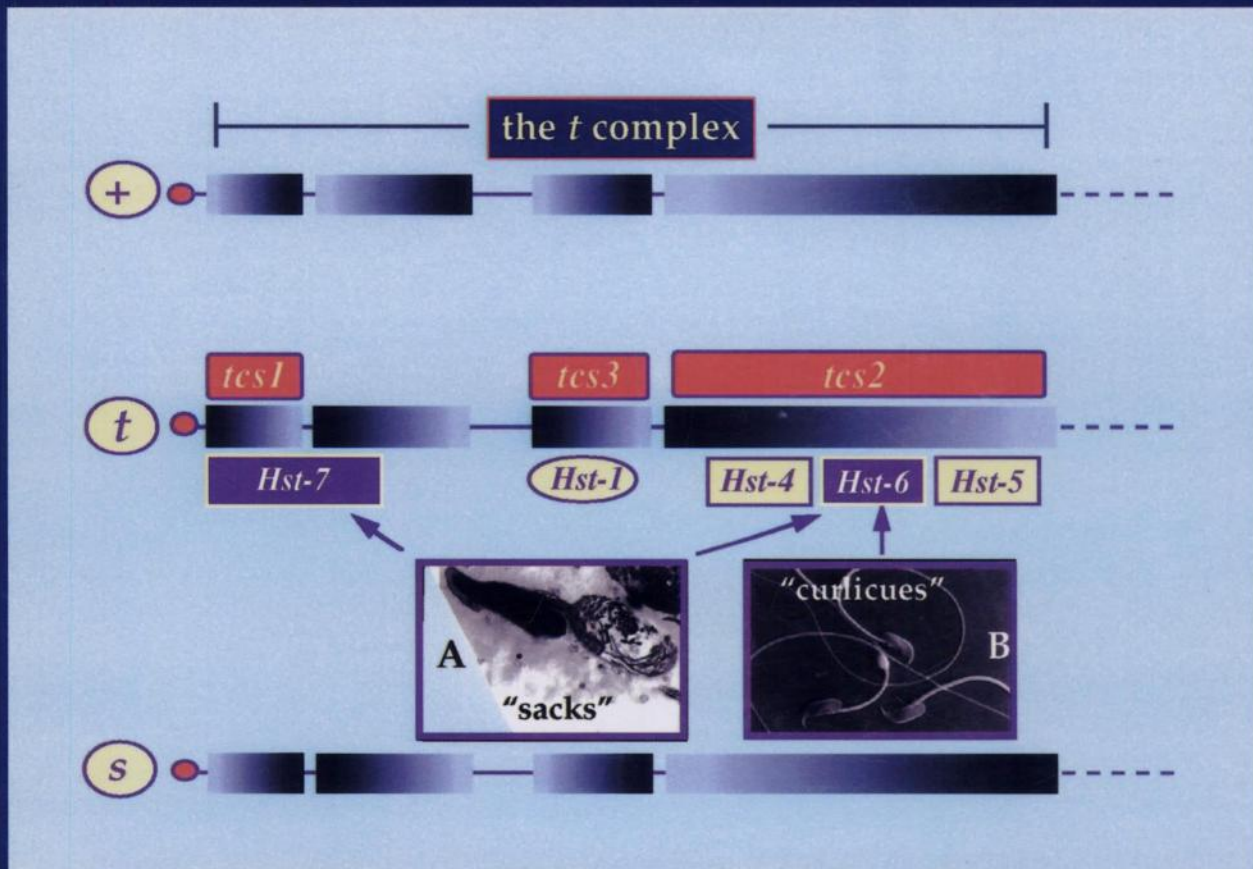


Journal of ANDROLOGY



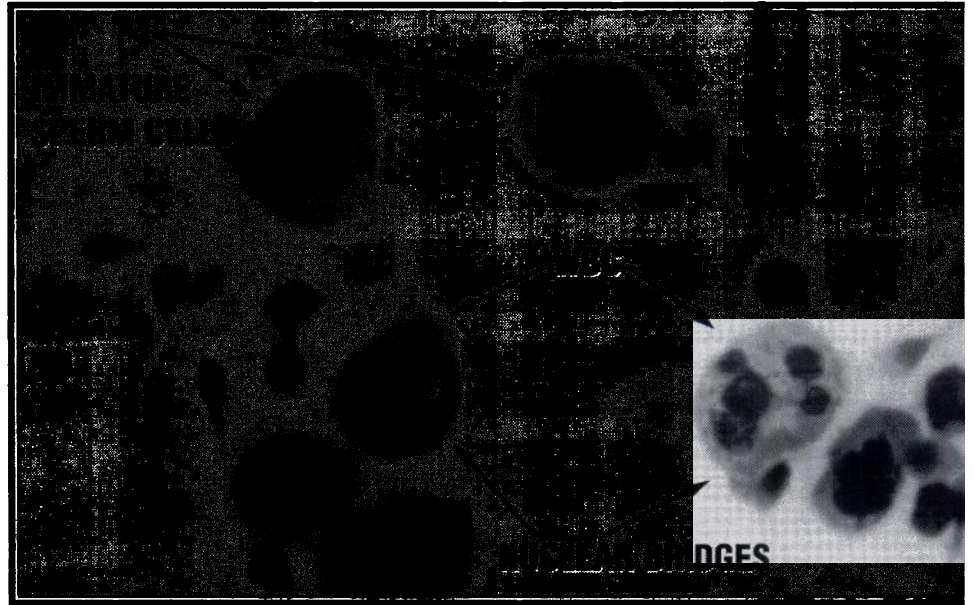
Editorial Office Relocation
see notice inside



Published by THE AMERICAN SOCIETY OF ANDROLOGY
Home page: <http://godot.urol.uic.edu/~androlog>

STAT III™

Andrology Stain



See the Difference

- Results in 30 seconds
- Differentiates immature sperm and white blood cells
- "Strict" sperm morphology
- Excellent resolution of head, neck, and tailpiece
- Long term archiving capabilities

*Spermatids (Immature Sperm Cells) can be differentiated from polymorphonuclear white blood cells (WBC) by using the following criteria: WBC contain connecting nuclear bridges and have a granular cytoplasm; Immature Sperm Cells are more spherical in shape.

Available From:

MidAtlantic
DIAGNOSTICS, INC.

338 Stokes Road • Suite E • Medford, NJ 08055
800-648-1151 • 609-953-3380 • Fax: 609-953-3286

PureSperm®

*For separation and purification of spermatozoa
by density-gradient centrifugation
of semen samples.*

- Colloidal silica particles coated with silane in salt solution
- Stable shelf life of 1-year in unopened bottle
- Isotonicity of 300 – 310 mOsm/kg water
- HEPES buffer included
- Glucose included
- pH of 7.4 – 7.8 at room temperature and at +37°C
- Density of approximately 1.10 to 1.25 g/mL
- Carbon content in dry residue 4 – 5%
- Low endotoxin levels
- Terminally sterilised by autoclaving
- Packaged in borosilicate glass bottles with silicone stoppers and tamper-proof seals
- Functionally equivalent to a 100% isotonic Percoll® stock solution

PureSperm® is a registered trademark of Nidacon Laboratories AB, Percoll® is a registered trademark of Pharmacia Biotech. Photo: Tony Stone Images / Andriano



Nidacon

Nidacon Laboratories AB, Mölndalsvägen 26, S-412 63 Gothenburg, Sweden. Tel: +46-31-40 54 40 / 40 54 41, Fax: +46-31-40

Cover: A diagram of three homologs of the mouse t complex, the proximal third (30–40 million base pairs) of chromosome 17. Each linear diagram represents a different homolog of chromosome 17. The top two, called + (wild-type) or t (t haplotype) respectively, are found in all subspecies of the house mouse, *Mus musculus*, including *Mus musculus domesticus*, from which most laboratory strains of mice are derived. The bottom diagram (S) represents a chromosome 17 homolog from the distantly related aboriginal mouse species, *Mus spretus*. The black circles at the left end of each homolog represent centromeres. Boxed regions in each homolog depict the t-complex inverted regions. For each inversion, the direction of shading represents the orientation of that inversion. Lines between the boxes represent small uninverted regions where legitimate recombination can occur. The dashed lines on the right of each homolog diagram represent the distal two-thirds of the chromosome. The sterility factors tcs1, tcs2, and tcs3 are shown above the t haplotype inverted regions to which they have been mapped. The map positions of the hybrid sterility factors Hst4, Hst5, Hst6, and Hst7 are depicted in their wild-type orientation below the t haplotype diagram. The map position of Hst1, the first mouse hybrid sterility factor discovered, is also shown, even though it is defined by a different interspecies combination (Forejt et al, 1991). Inset A depicts a cauda epididymal spermatozoon with a normal-appearing head and a sacklike caudal region of cytoplasm instead of a flagellum. The diagonal arrows pointing from this inset to both Hst6 and Hst7 reflect the fact that this phenotype maps to both Hst6 and Hst7. Inset B depicts sperm that exhibit the “curlicue” phenotype, with the vertical arrow above the inset indicating that the map position of this phenotype is the Hst6 locus. (See article by Pilder et al.)

ATTENTION

Check out the World Wide Web Home Page for the ASA:

<http://godot.urol.uic.edu/~androlog>

Contents include: Society officers and Council members, committees, past Presidents, the ASA Constitution and By-Laws, past and future meetings, information about the Journal of Andrology, the ASA Newsletter, Androlog—the andrology user’s group, links to other societies dealing with reproduction, and links to our members.

SPECIAL ANNOUNCEMENT

Editorial Office Relocation

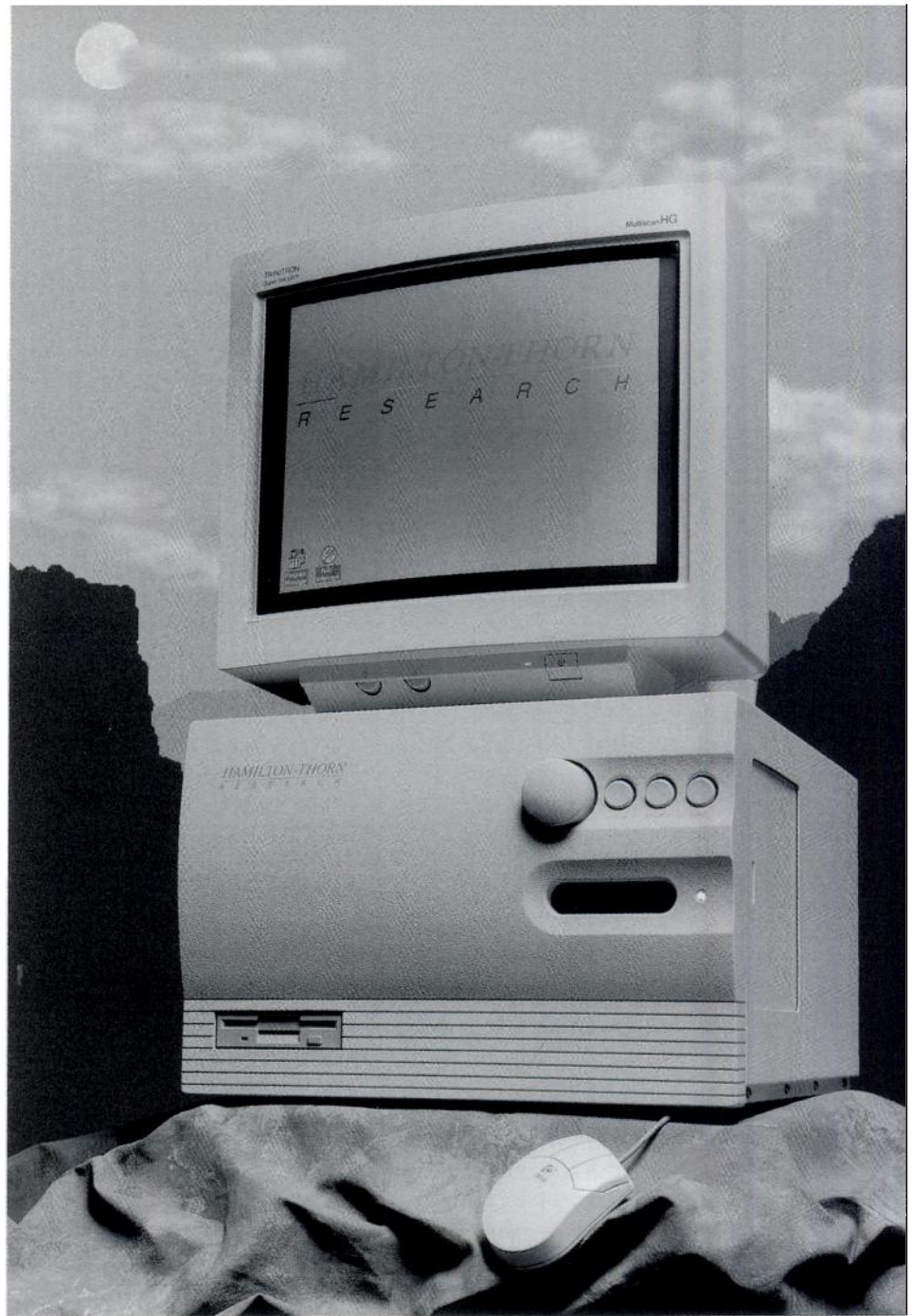
As of July 1, 1997, the Editorial Office of the *JOURNAL OF ANDROLOGY* will be located at the University of Minnesota, Minneapolis, Minnesota. All manuscripts and correspondence should be sent to:

Journal of Andrology
4-144 Jackson Hall
321 Church Street, S.E.
Minneapolis, Minnesota 55455

Office hours: 7:45 AM–4:30 PM (CST)
Tel: 612-625-1488
Fax: 612-625-1163
E-mail: andrology@med.umn.edu

New HEIGHTS in Flexible cell analysis

Building upon the rock solid reliability of the **HTM-IVOS**, the new Version 10 system climbs to innovative heights in semen analysis. With multiple magnifications, extended analysis options, and new Windows™ based software, the Version 10 **HTM-IVOS** is the pinnacle of versatility.



HTM-IDENT

HTM-IDENT, the first option of the Spectra series of integrated, fluorescent technologies, yields a higher degree of accuracy in sperm counts and concentrations. With the use of a specialized DNA-specific dye, the sperm are readily identified under fluorescent illumination and easily discriminated from debris.

HTM-DIMENSIONS

Expanding into the field of morphology analysis, **HTM-DIMENSIONS** automated analysis system objectively classifies sperm by strict analysis of the head, acrosome, and midpiece. High power, 100x magnification produces crisp images of stained sperm for analysis.

Call today for more information about the new Version 10 HTM-IVOS, HTM-IDENT, and HTM-DIMENSIONS, the three new 'Innovations To Rely On' from Hamilton-Thorn Research.

181 Elliott St., Suite 505, Beverly, MA 01915, (508) 921-2050, (800) 323-0503 Fax: (508) 921-0250

**HAMILTON-THORN
RESEARCH**