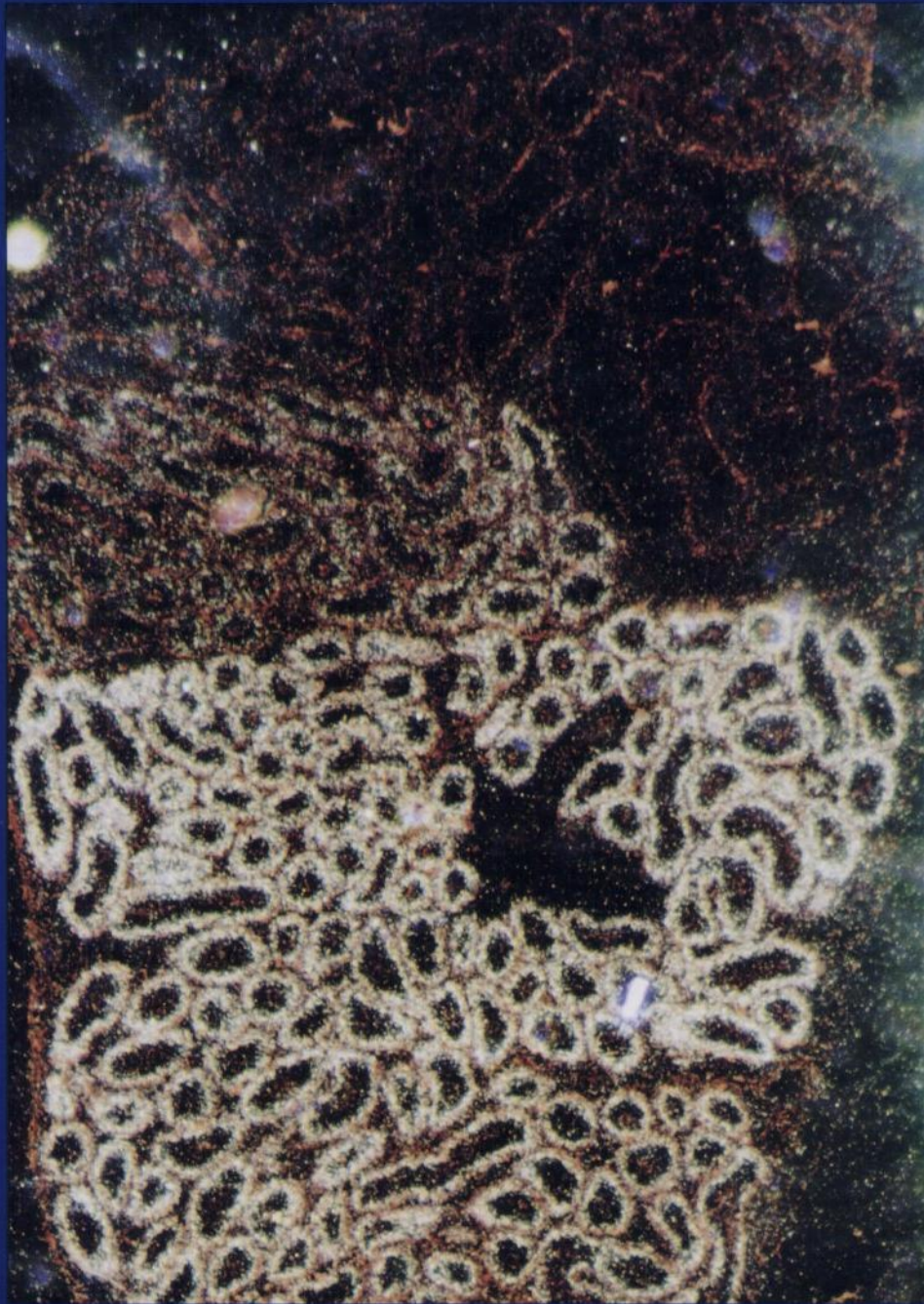


SEPTEMBER/OCTOBER 1996
Volume 17 Number 5

Journal of
ANDROLOGY



Published by THE AMERICAN SOCIETY OF ANDROLOGY

New HEIGHTS in Flexible cell analysis

Building upon the rock solid reliability of the **HTM-IVOS**, the new Version 10 system climbs to innovative heights in semen analysis. With multiple magnifications, extended analysis options, and new Windows™ based software, the Version 10 **HTM-IVOS** is the pinnacle of versatility.



HTM-IDENT

HTM-IDENT, the first option of the Spectra series of integrated, fluorescent technologies, yields a higher degree of accuracy in sperm counts and concentrations. With the use of a specialized DNA-specific dye, the sperm are readily identified under fluorescent illumination and easily discriminated from debris.

HTM-DIMENSIONS

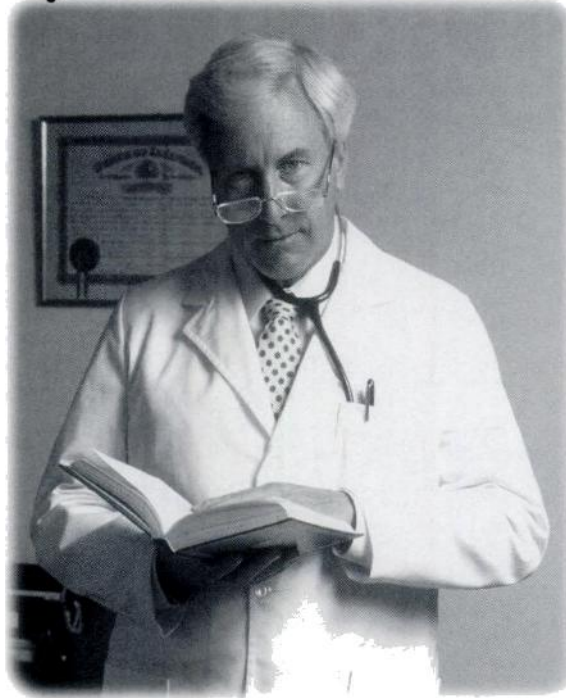
Expanding into the field of morphology analysis, **HTM-DIMENSIONS** automated analysis system objectively classifies sperm by strict analysis of the head, acrosome, and midpiece. High power, 100x magnification produces crisp images of stained sperm for analysis.

Call today for more information about the new Version 10 HTM-IVOS, HTM-IDENT, and HTM-DIMENSIONS, the three new "Innovations To Rely On" from Hamilton-Thorn Research.

181 Elliott St., Suite 505, Beverly, MA 01915, (508) 921-2050, (800) 323-0503 Fax: (508) 921-0250

**HAMILTON-THORN
RESEARCH**

Access To Donor Information Is What My Clients Really Want



And Nobody Delivers Like Cryogenic Laboratories.

Providing your patients the information and support they want has made Cryogenic Laboratories one of the most respected Sperm Banks in the nation.

We're committed to helping your patients make decisions they feel good about — by providing extensive services like Donor Profile/Medical History, Computer Assisted Donor Portfolios (D.A.D.S.™), Photo Assisted Donor Selection, Personalized Patient Phone Consultation and Comprehensive TDI Information Folders.

We also offer a free Physician/Patient Video that provides an in-depth look at our services.

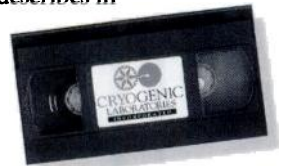
It's a highly educational tool you can use in your clinic and pass on to your patients. It describes in detail the donor selection process,

our extensive screening procedure, documented clinical success and heart-warming testimonials.

You'll want to give one to every patient.

So when you give your patients a choice of sperm banks — make Cryogenic Labs one of those choices and discover like so many physicians have,

when it comes to satisfying your patients' desires, nobody delivers like Cryogenic Laboratories.



**CRYGENIC
LABORATORIES**

Roseville, Minnesota

Fax 612-489-8989 E-mail: CryoLabInc@aol.com

800-466-2796

Technological Services For Reproductive Medicine

CLI Affiliates Include:

Park Avenue Fertility, Ltd.
New York, New York
800-842-6600

ReproMed, Ltd.
Toronto, Ontario
416-233-1212



**Samaritan Institute of
Reproductive Medicine**
Phoenix, Arizona
602-239-3608

| | |
|---|--|
| Snow Leopard (<i>Panthera uncia</i>) Spermatozoa Are Sensitive to Alkaline pH, But Motility <i>In Vitro</i> Is Not Influenced by Protein or Energy Supplements / T. L. Roth, W. F. Swanson, D. Collins, M. Burton, D. M. Garell, D. E. Wildt | 558 |
| Anti-Bull Sperm Monoclonal Antibodies: I. Identification of Major Antigenic Domains of Bull Sperm and Manifestation of Interspecies Cross-Reactivity / J. D. Ambrose, R. Rajamahendran, T. Yoshiki, C. Y. G. Lee | 567 |
| Anti-Bull Sperm Monoclonal Antibodies: II. Binding Changes During Capacitation and Influence on Sperm-Zona Interactions <i>In Vitro</i> / J. D. Ambrose, R. Rajamahendran, C. Y. G. Lee | 579 |
| Choice of Operating Conditions to Minimize Sperm Subpopulation Sampling Bias in the Assessment of Boar Semen by Computer-Assisted Semen Analysis / C. Holt, W. V. Holt, H. D. M. Moore | 587 |
| LETTER TO THE EDITOR / R. C. Northcutt | 597 |
| American Society of Andrology (ASA) News | Announcements |
| Future ASA Annual Meetings | Erratum |
| <i>Handbook of Andrology</i> | VIth International Congress of Andrology |
| | Andrology Meetings |
| | XXIII Annual Meeting of IETS |
| | |

Cover: *Differential expression of clusterin mRNA in the adult mouse caput. Section of adult epididymis hybridized to radiolabeled pG21-04 (clusterin) antisense probe. The steady-state level of clusterin mRNA is not detected in the efferent ductules and is very low in segment 1. Steady-state levels increase in segments 2-4 and then decrease again in segment 5. (See article by Ahuja et al.)*

ATTENTION

Check out the World Wide Web Home Page for the ASA:

<http://godot.urol.uic.edu/~androlog>

Contents include: Society officers and Council members, committees, past Presidents, the ASA Constitution and By-Laws, past and future meetings, information about the Journal of Andrology, the ASA Newsletter, Androlog—the andrology user’s group, links to other societies dealing with reproduction, and links to our members.